

# Blue Print ADT38016

To fit:

Toyota Estima (Lucida/Emina) 2.2DT 1992 > 1999

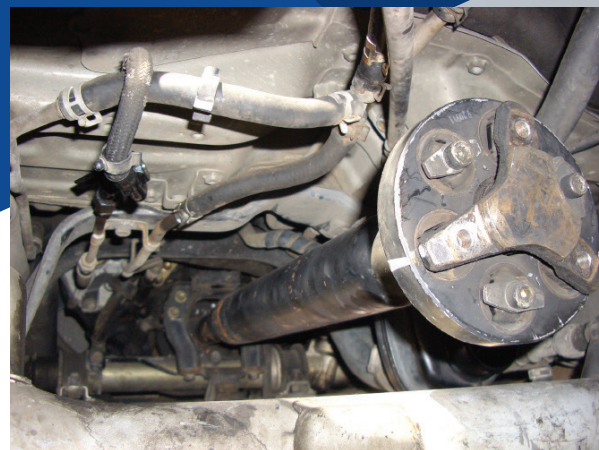
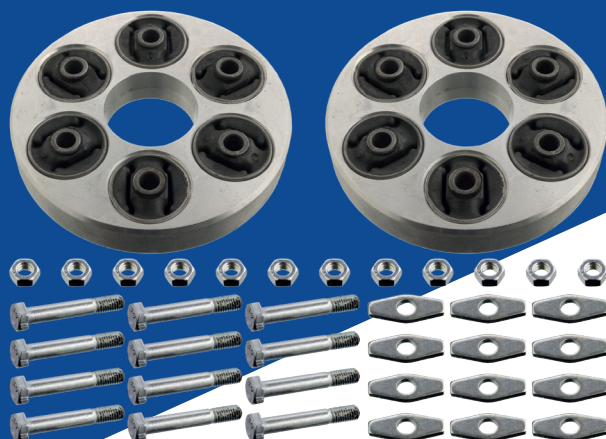


Figure 1

EN

## Flexible Coupling Kit for propshaft

The Toyota Estima, Lucida and Emina models commonly suffer from an ancillary driveshaft coupling failure.

The alternator, air conditioning compressor, power steering pump and cooling fan are located forward of the mid-mounted engine and are driven by the ancillary driveshaft. If the condition of the flexible couplings deteriorates, it will lead to separation of the rubber from the metal carrier – causing rapid wear in the joints.

A worn coupling is normally associated with excessive noise and vibration at idle and should be repaired by replacing the coupling at each end of the ancillary shaft.

Blue Print supplies the complete kit (ADT38016) for the above applications, comprising of two couplings and all required fixings.

### Fitment tips

- Mark the shaft flanges prior to removal and refit them in the same position (this is to keep the correct shaft balance).
- If possible, do not remove the 'Horse Shoe' shaped carrier assembly (fig 1) as this may obscure access to the front coupling retaining bolts. The bolts should be accessible using an extension bar and socket, whilst rotating the driveshaft to access one bolt at a time. However, if removal is necessary, it is important to mark the original position beforehand as the Horse Shoe carrier position is factory set for optimum alignment.
- Remove any corrosion from the driveshaft flanges (especially the engine coupling) before refitting.

For more technical information please visit: [partsfinder.bilsteingroup.com](http://partsfinder.bilsteingroup.com)