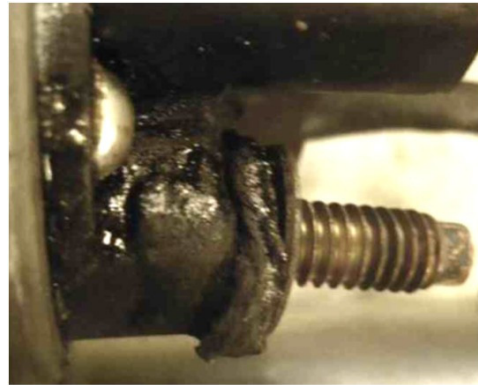


STARTER REPLACEMENT PROCEDURE – 227012 AND 227012A



INTRODUCTION

Shown below, you can find the procedure that you must follow to replace starter 227012 and 227012A.

PROBLEM

The vehicle CHEVROLET Captiva (Diesel engine 2,2L Z22D1 4 cylinders 16v) is sold with an inadequate size of the battery cable. In normal operation, engines' vibrations can cause tensions along the cable and you may lose the nut. Consequently, abnormal current flow and temperature increase in the connection area can damage battery cable and starter.

INSTALLATION INSTRUCTION

Steps to follow:

- 1) Fix the nut adequately
- 2) If it is necessary, replace the cable with longer one.earth contact.

As above explained, starter can damage by external causes, not covered under warranty by MESSMER starter.