



Service Info



Change to the pulleys of some tensioning arms for the accessory drive

Manufacturers: Audi, Ford, Renault Trucks,
Seat, Škoda, VW

Part nos: 531 0614 30
534 0138 30
534 0145 10
534 0150 10
534 0176 10

Extensive vehicle applications can be found in our catalogue.

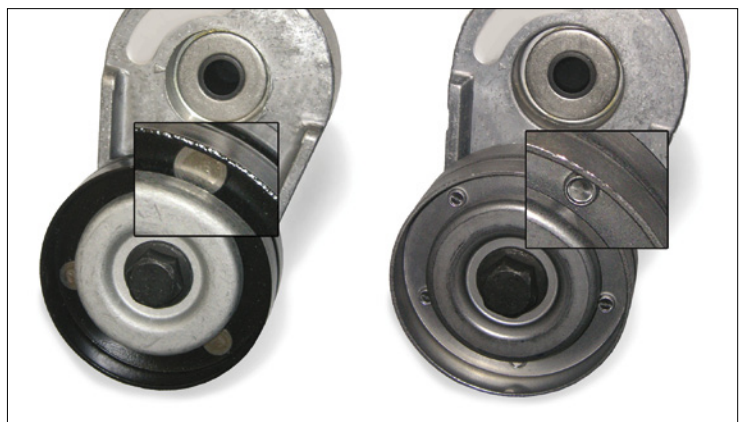


Image 1: Detailed view of the pulleys in the previous design (left) and the new design (right)

With immediate effect, Schaeffler Automotive Aftermarket is offering versions with modified pulleys for the tensioning arms listed.

As shown in Image 1, the differences are the coating (previously black, now metallic grey) and the link between the two halves of the pulley (previously riveted, now clinched).

During the transition period, we may have mixed stocks of both designs. Both versions meet the technical requirements and can be used without restriction for the vehicles specified in the catalogues.

Observe the specifications of the vehicle manufacturer!

Spare parts and technical information can be found under www.schaeffler-aftermarket.com or www.RepXpert.com.

Phone: +44 (0) 14 32 264 264*
Fax: +44 (0) 14 32 375 760
info@luk-as.co.uk
www.schaeffler-aftermarket.com

* Calls from within the UK 08457 001100

SCHAEFFLER
AUTOMOTIVE AFTERMARKET

