



professional

Alternator Coupling Pulley Kit

fits:

VW Touareg, Multivan T5, Transporter T5
with 2.5 TDI and 5.0 TDI engines



SWAG Nr. 32 93 0816

PROBLEM

Severe vibrations and unusually loud noises in the ancillary drive area may be the warning signs of imminent failure of the freewheeling alternator pulley.

CAUSE

The alternator coupling transfers the torque to the alternator and air-conditioning compressor to dampen vibrations between the connected shafts. Belt alignment and service intervals are critical in this respect, when replacing the alternator freewheel and the alternator coupling, the alternator and/or air-conditioning compressor should also be removed. The alternator is fitted together with a bracket. If both components are separated, after fitting, the alternator becomes misaligned. The result is that the alignment is no longer correct and the alternator coupling can break. (see Fig. 1). However, a defective alternator freewheel can also cause damage, it causes the alternator coupling to be overloaded, which can lead to it breaking.

SOLUTION

As the alternator should not be separated from the bracket, it should be removed and fitted complete with bracket during repairs. SWAG strongly recommends paying close attention to the service intervals for the alternator freewheel and alternator coupling: in vehicles without diesel particulate filters (DPF), this replacement should take place every 150,000 km, and in those with DPF, every 180,000 km.

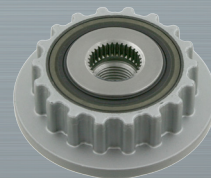
IMPORTANT

SWAG also advises that the alternator freewheel should always be replaced at the same time as changing the alternator coupling. We therefore offer the coupling along with alternator freewheel in a complete kit (SWAG no. 32 93 0816 / Repl. no. 070 903 201 E S1). Alternator freewheel (SWAG no. 32 92 6958 / Repl. no. 070 903 201 C) and coupling (SWAG no. 32 93 0798 / Repl. no. 070 903 327 D) are available individually.

1



2



SWAG no. 32 92 6958

Repl. no. 070 903 201 C

3



SWAG no. 32 93 0798

Repl. no. 070 903 327 D