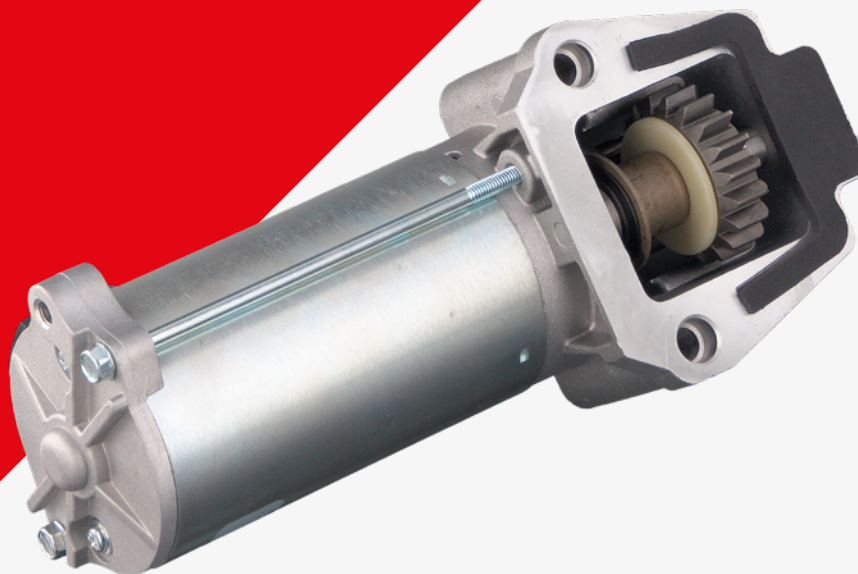




febi 101601

to fit:
Ford Transit 2.4 Tdci 00-06



EN

Starter Motor

Problem

Starter motor solenoid clicking and not engaging or intermittent operating of the starter motor.

Cause

Excessive amounts of ferrous dust produced by the gradual deterioration of the Dual-Mass Flywheel. This can cause the starter motor to fail by contaminating the motor magnets and the pinion shaft.

Solution

Remove the transmission and replace any necessary worn clutch and flywheel components. Then replace the faulty starter motor. Failure to do this, will mean that the new starter motor will become contaminated and fail in a very short time.

For more technical information please visit: partsfinder.bilsteingroup.com