

FITTING INSTRUCTIONS

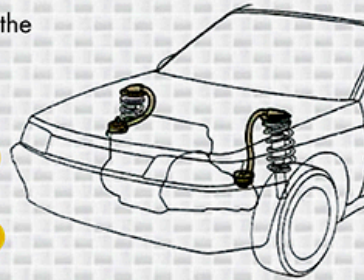
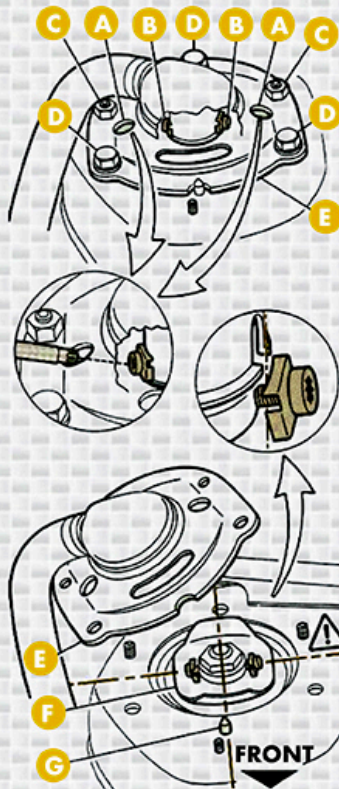
ANT-TRAMP SYSTEM ON STRUT ACCESS TO THE UPPER MOUNTING

Peugeot 605



FI036EU

The anti-tramp system absorbs the negative effects of the engine movements and vibration.



Position the restraining cables (Ref Peugeot 976 848) according to the manufacturer's instructions.

DISMANTLING:

- 1- Insert a Torx 20 screwdriver in holes **A** and loosen screws **B** by 2 turns **(do not unscrew all the way)**
- 2- Unscrew and remove the 2 nuts **C** and the 3 bolts **D**
- 3- Remove cover **E** : the upper part of the strut is now accessible.

RE-ASSEMBLY :

- 1- When the strut is mounted, the upper retainer **F** should be in line with the centre line of the car **(the 2 Torx screws will be in line with the front axle)**
- 2- Position cover **E** correctly (positioning pin **G**) with the holes over the Torx screws.
- 3- Refit the 3 bolts **D**:
Tightening torque: 2 daN.m
Refit the 2 nuts **C** (lightly tighten).
Tighten the 2 Torx screws through the holes in cover **E**.