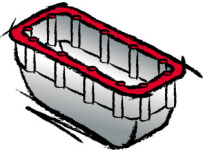
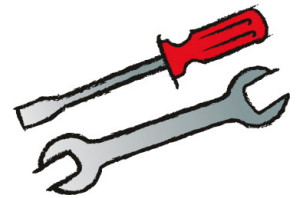


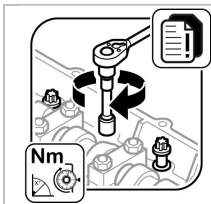


Das Original

TSI 10/11



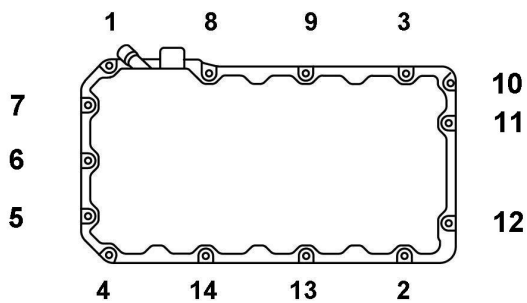
Mercedes-Benz OM 541.9 | 542.9



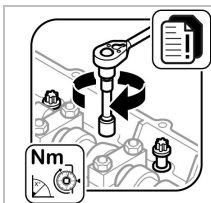
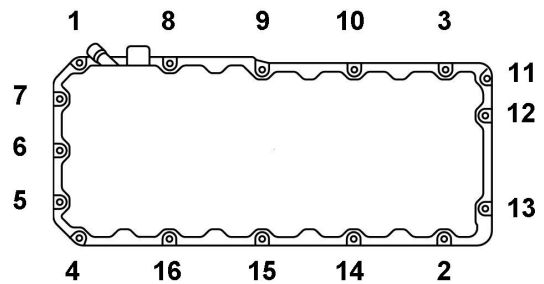
Metallo leggero | Termoplastici

55 Nm

Metallo leggero | Termoplastici OM 541.9:



Metallo leggero OM 542.9:

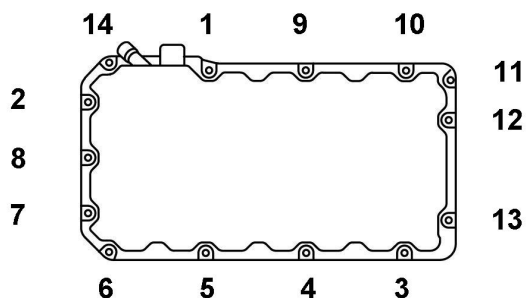


Duroplast

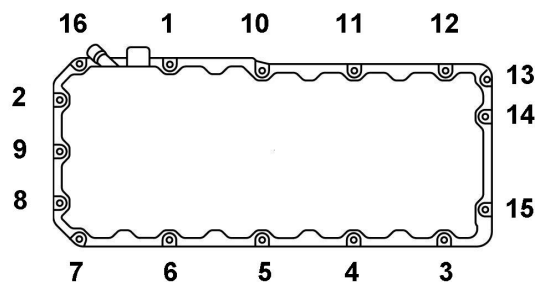
1a fase 10 Nm

2a fase 40 Nm

Duroplast OM 541.9:

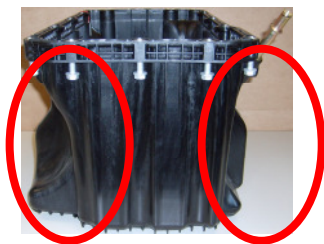


Duroplast OM 542.9:

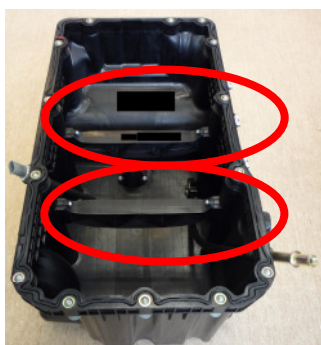


Coppa dell'olio Termoplastici

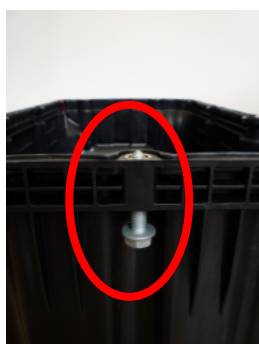
Caratteristiche distintive:



- Forma arcuata.



- Rinforzi interni.



- Assenza di viti microincapsulate. Nelle operazioni di smontaggio e montaggio si può così fare a meno di ripassare le filettature all'interno del carter, della centralina e del coperchio anteriore.
- Non è necessario sostituire le viti.