



03/15

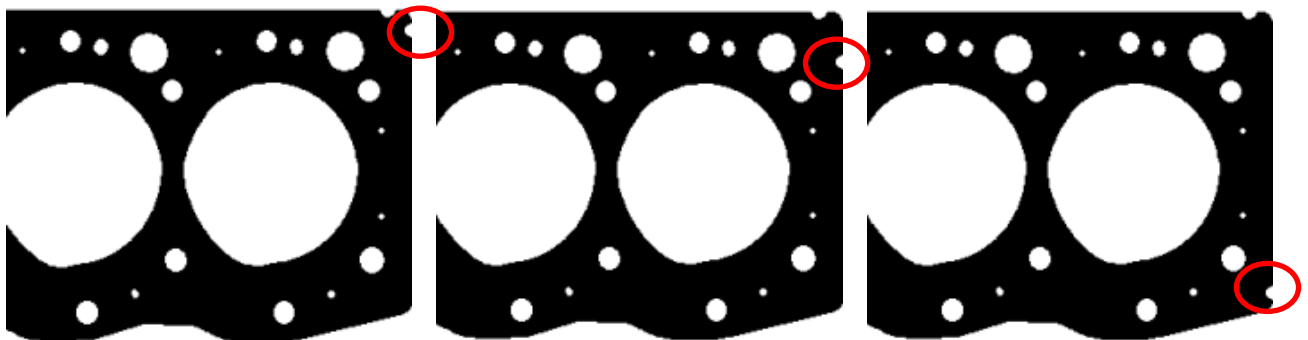
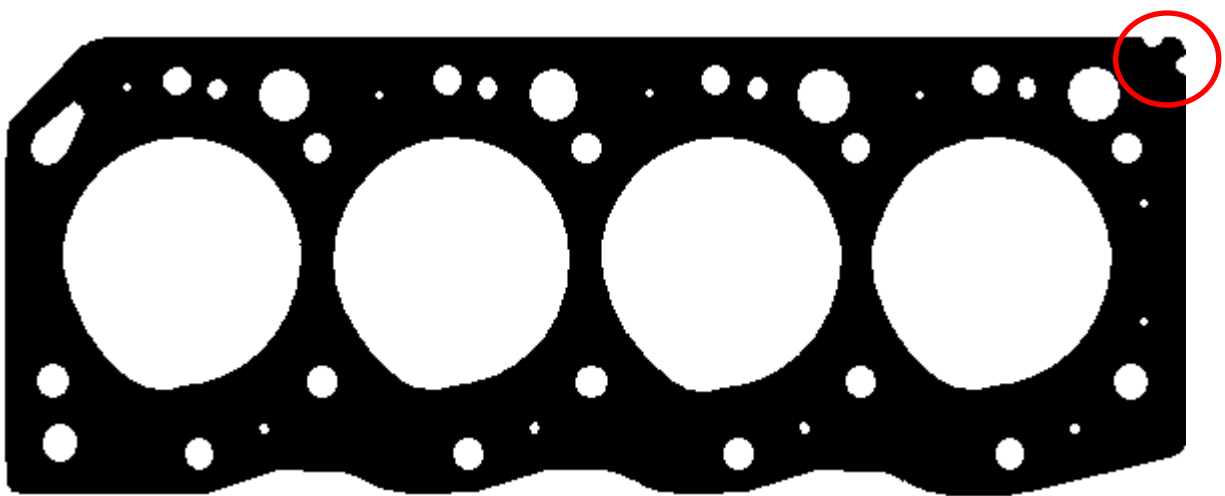


Das Original

Joint d'étanchéité, culasse

Toyota

2 L | 2 L-T



152.790
11115-54083-B0
Ø 93,5
± 1,45 mm

152.810
11115-54083-D0
Ø 93,5
± 1,55 mm

152.820
11115-54083-F0
Ø 93,5
± 1,65 mm

01/01