



03/15

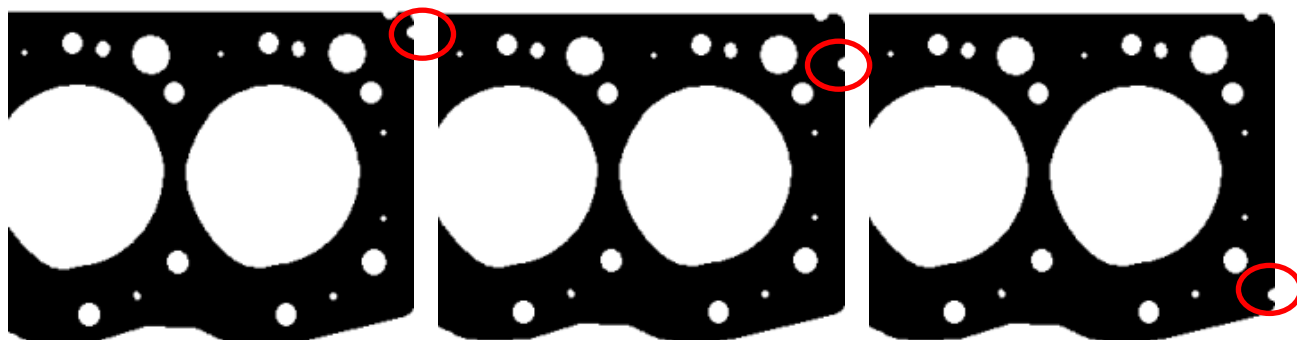


Das Original

Dichtung, Zylinderkopf

Toyota

2 L | 2 L-T



152.790  
# 11115-54083-B0  
Ø 93,5  
± 1,45 mm

152.810  
# 11115-54083-D0  
Ø 93,5  
± 1,55 mm

152.820  
# 11115-54083-F0  
Ø 93,5  
± 1,65 mm

01/01